

Srđan Čarnić

# **PRACTICAL CHESS TUTOR From Basics to Mastery 2**

**Elements of Chess Strategy and Tactics for  
Club Players**



**INFORMANT  
PUBLISHING**

Author

FM, FT Srđan Čarnić

Contributors

Zoran Arsović, Jovan Petronić

Editors

Goran Arsović, Igor Žvegljić

Translation

Igor Žvegljić

Design

Miloš Majstorović

Editing and Typesetting

Jelena Arsović

CEO

Mirjana Ilić

© Copyright 2024 Informant Publishing

All rights reserved. No part of this publication may be reproduced, stored in a retrieval system or transmitted in any form or by any means: electronic, magnetic tape, mechanical, photocopying, recording or otherwise, without prior permission in writing from the publisher.

ISBN 978-86-82852-06-3

Publisher

Informant Publishing

11001 Beograd, Višnjička 91d, Srbija

Phone: +381 60 0650 669

E-mail: [info@informantpublishing.com](mailto:info@informantpublishing.com), Internet: <https://www.informantpublishing.com>

# CONTENTS

SIGNS .....	4
INTRODUCTION .....	5
PART I .....	7
CHAPTER I Strong and Weak squares .....	9
CHAPTER II Exchanges and piece improvement .....	21
CHAPTER III The open file and the 7 <sup>th</sup> (2 <sup>nd</sup> ) rank .....	63
PART II .....	81
CHAPTER I The Space advantage and the center .....	83
CHAPTER II Knight stronger than Bishop .....	117
CHAPTER III Bishop stronger than Knight .....	134
CHAPTER IV The Bishop pair .....	144
PART III .....	171
CHAPTER I The Passed and Mobile pawns .....	173
CHAPTER II The Pawn Majority .....	193
CHAPTER III Doubled Pawns .....	210
PART IV .....	227
CHAPTER I Prophylaxis .....	229
CHAPTER II Initiative, Attack and Calculation .....	241
CHAPTER III Tactics corner .....	266
About the Author .....	275

# INTRODUCTION

*PRACTICAL CHESS TUTOR – FROM BASIC TO MASTERY 2* is a complete manual of chess strategy for club players, with some introductory tactical themes at the very end of the book. All the crucial elements of strategy are examined in great detail by examining the most instructive classical and modern games (100 games in total).

If you have studied the first book of the series (*Essential Skills for Ambitious Improvers*) you should have a firm foundation and be able to tackle themes in the second book without much difficulty. But of course, the second book can be studied on its own, and especially if you are keen on chess strategy or you believe that your strategic skills need improvement.

Strategic themes we focus on are: strong and weak squares, open file, center, exchanging and improving of the pieces, bishop pair, bishop versus knight situations, various pawn structures and formations, prophylactic play etc. I decided to explore strategic themes by presenting model games in their entirety so you could have a whole picture of the developments and see how the game ended once the strategic advantage had been obtained.

Diligent reader will notice that themes often intertwine – eg. after an exchange of pieces one side claims the bishop pair or open file.

I advise you to go through the whole games on a chess board (real one or electronic) and to invest time and attention to diagram positions. You can try to find the correct move in those situations on your own, having in mind that these positions are strategic in nature so quite often there are multiple good moves (you could even find some improvements over the game moves). Such practice will help you to absorb the ideas and principles much easier!

Even though we cover the opening phase of the games as well, we do not focus on openings in great detail. Many of the games are very old and the openings played are not “correct” from modern-day standpoint. Also, openings are beyond scope of our focus in this manual, so it would be counter-productive to make the analysis dense without any rational reason.

This manual can be used by students working alone or with friends, parents who study chess with their children, and of course chess trainers who need carefully prepared material for lectures. Finally, this book can be read as a collection of instructive and entertaining chess games with special emphasis on chess strategy.

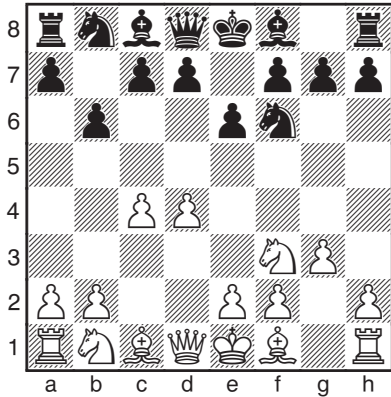
See you in book three!

Srdan Čarnić  
FM, Fide Trainer  
Belgrade, September 2024

Alexander Khalifman - Boris Gulko

Moscow 1990

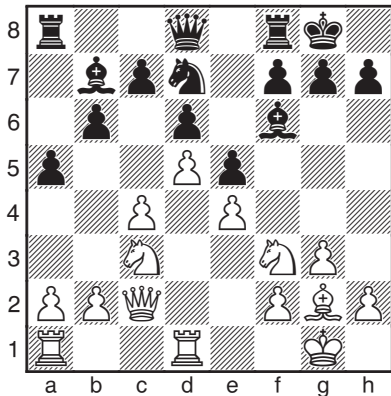
1.d4 ♘f6 2.c4 e6 3.♘f3 b6 4.g3



4...♙b7

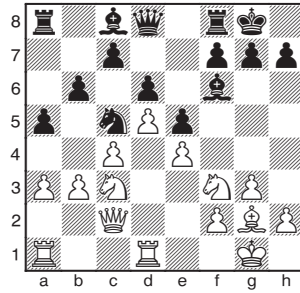
The main line of the Queen's Indian Defence continues with 4...♙a6

5.♙g2 ♙e7 6.♘c3 ♘e4 7.♙d2  
♙f6 8.♙c2 ♘xd2 9.♙xd2 d6 10.  
0-0 0-0 11.♖fd1 ♘d7 12.d5 e5  
13.e4 a5 14.♙c2



14...♙e7?! The following line is highly instructive and leads to equal-

ty: 14...♘c5! 15.b3 ♙c8 16.a3



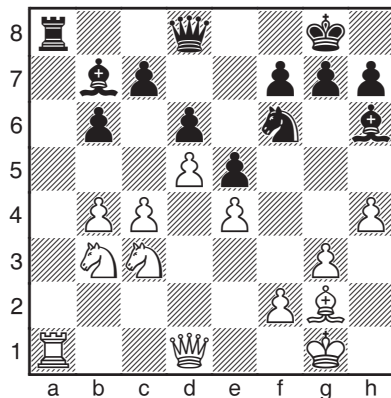
16...a4! 17.b4 ♘b3 18.♖ab1 ♙d7  
19.♘d2 ♘d4 20.♙d3 g6 21.♘f3  
♘b3 22.♘d2 ♘d4= with the repe-  
tition of moves.

15.a3 ♖fb8 16.b4 Grandmas-  
ter Khalifman seizes space on the  
queenside but Black defends himself  
in a rather efficient manner.

16...♙d8 17.♘d2 ♙g5 18.♘b3  
axb4 19.axb4 ♖xa1 20.♖xa1  
♖a8 21.♙d1 ♘f6

♟ 21...g6 22.h4 ♙h6=

22.h4 ♙h6



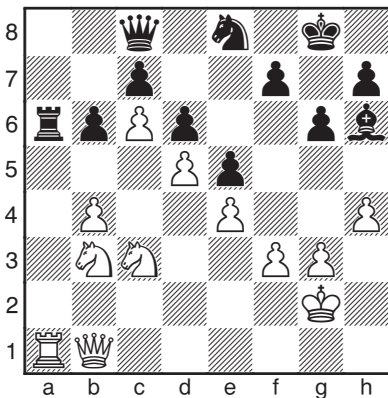
23.c5! Of course, we execute the  
advance and breakthrough on the  
side where we have domination, or at

least a slight edge!

**23...♖b8?** This is a serious mistake. Even a world class Grandmaster such as Gulko errors being under pressure. It is very difficult to play a bit worse position for a long period of time.

Black could have secured a draw by calculating the following line: 23...♖xa1! 24.♗xa1 bxc5 25. bxc5 ♗b8 26.♗a3 g6 27.♗b4 (27.c6 ♕c8) 27...♗a8 28.cxd6 ♕f8 29.♗a5 ♕xd6 30.♞b5 ♗xa5 31.♞xa5 ♕a6 32.♞xd6 cxd6= with a so called *dead draw*.

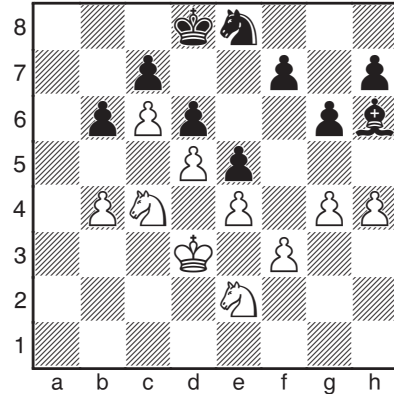
**24.c6 ♕a6 25.♕f1 ♕xf1 26.♗xf1 g6 27.♞g2 ♗c8 28.♗b1 ♖a6 29.♗f1 ♖a8 30.f3 ♞e8 31.♗b1 ♖a6 32.♗f1 ♖a8 33.♗b1 ♖a6**



**34.♖a2 ♗a8 35.♗a1!** White is forcing the trade of queens and rooks so his knights might prove their power in this rather closed position.

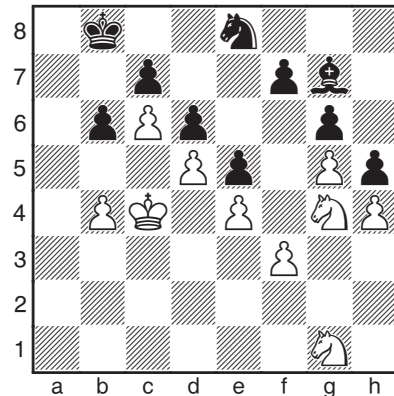
**35...♖xa2+ 36.♗xa2 ♗xa2+ 37.♞xa2± ♕f8 38.♞c3 ♕e7 39.♕f2 ♞g7 40.♞b5 ♞e8 41.♕e2 ♕d8**

**42.♕d3 ♖c8 43.♞c3 ♕d8 44.♞a1 ♕c1 45.♞e2 ♕h6 46.♞c2 ♕g7 47.♞e3 ♕h6 48.♞c4 ♞f6 49.g4 ♞e8**



**50.g5!** White manages to freeze Black's play on both flanks.

**50...♕g7 51.♞e3 h6 52.♞g1 ♖c8 53.♖c4 ♖b8 54.♞g4 h5**

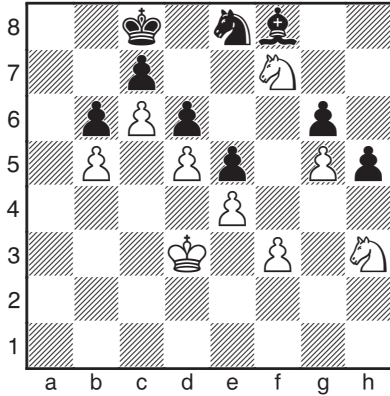


**55.♞h6!** A clever move! Of course, the white knight is immune to capture as otherwise the h-pawn becomes unstoppable.

**55...f6**

**55...♕xh6 56.gxh6 ♞f6 57.♞h3 ♞h7 58.♞g5+-**

56. ♖f7 f×g5 57. h×g5 ♔a7 58. b5  
 ♕b8 59. ♗h3 ♔c8 60. ♖d3 ♙f8



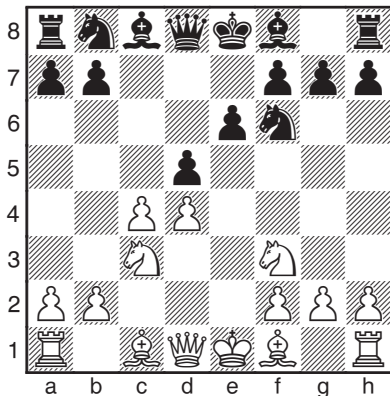
This desperate bishop move announces a quick resignation.

61. ♗h8! ♔d8 62. ♗xg6 ♙e7 63.  
 ♗h4 1 : 0

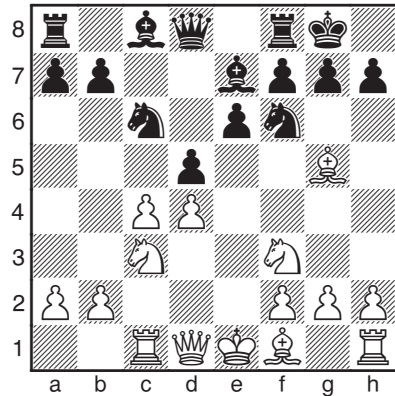


Mikhail Botvinnik – Alexander  
 Konstantinopolsky  
 Sverdlovsk 1943

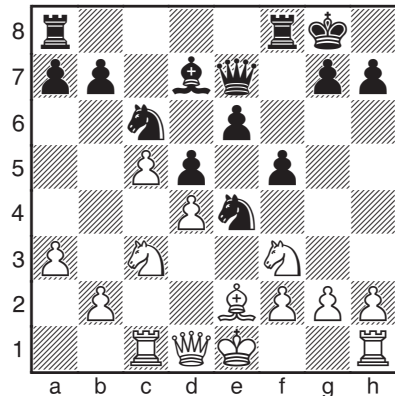
1. e4 c6 2. d4 d5 3. exd5 cxd5  
 4. c4 ♗f6 5. ♗c3 e6 6. ♗f3



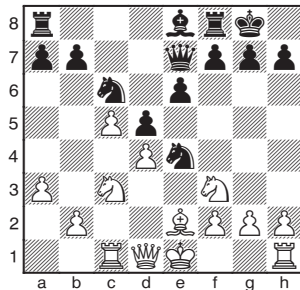
6... ♙e7 7. ♙g5 0–0 8. ♖c1 ♞c6



9. c5!? ♞e4 10. ♙xe7 ♕xe7 11.  
 ♙e2 ♙d7 12. a3 f5



12... ♙e8!



13. 0–0 (13. ♙b5?! ♞xc3 14. ♖xc3  
 e5!) 13... f5 14. b4 a6=

# CHAPTER II

## KNIGHT STRONGER THAN BISHOP

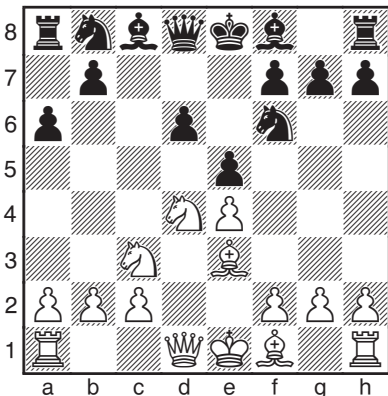
In the following examples we will explore situations where the knight proves to be superior to the bishop. Usually, that occurs in closed or blocked positions. Also, knights are quite strong when they land on a safe outpost square in the center or on a particularly important square in a concrete situation.



**Judit Polgar 2670 - Viswanathan Anand 2770**

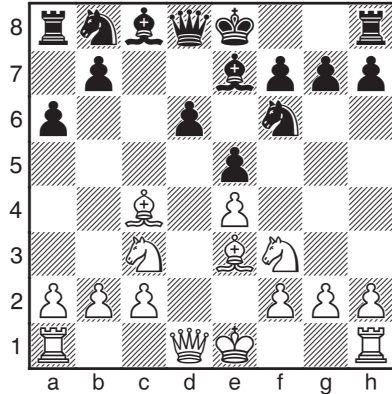
Wijk aan Zee 1998

**1.e4 c5 2.♘f3 d6 3.d4 cxd4 4.♘xd4 ♘f6 5.♘c3 a6 6.♙e3 e5**



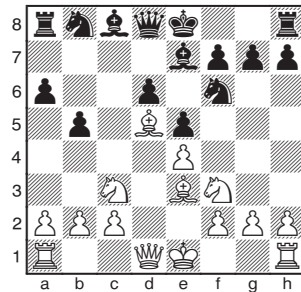
**7.♘f3** The main Najdorf Sicilian line continues with **7.♘b3 ♙e6**

**7...♙e7 8.♙c4**



**8...0-0**

**8...b5? 9.♙d5**



**9.0-0 ♙e6 10.♙e2**

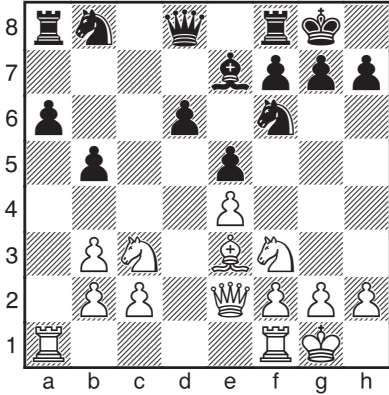
**10.♙xe6 fxe6 11.♘a4 ♘g4 (11...♘bd7?!)** This careless move would bring much trouble to Black. **12.♘g5 12.♙d3 b5 13.♘b6 ♖a7 14.♘d5 ♘xe3 15.♘xe7+ ♙xe7 16.♙xe3 ♖c8=**



10...b5

10...♖c7 11.♙b3 b5=

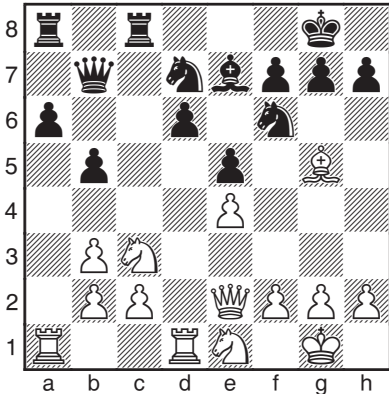
11.♙b3 ♘xb3 12.axb3



12...♘bd7

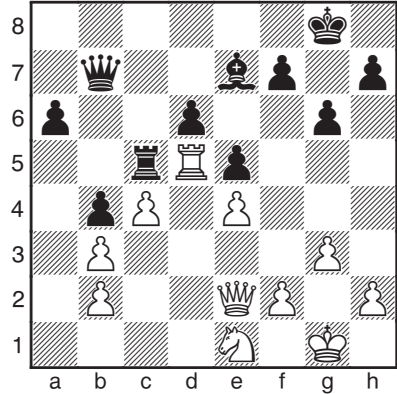
12...b4 13.♘a4 (13.♘d5 ♘xd5 14.exd5 a5 15.♘d2 ♘d7 16.♘c4 f5 17.f3±) 13...♘bd7 14.♘d2±

13.♖fd1 ♖c7 14.♙g5 ♖fc8 15.♘e1 ♖b7



16.♙xf6! The strongest female chess player ever Judit Polgar initiates the exchange in order to gain full control over the extremely important d5-square.

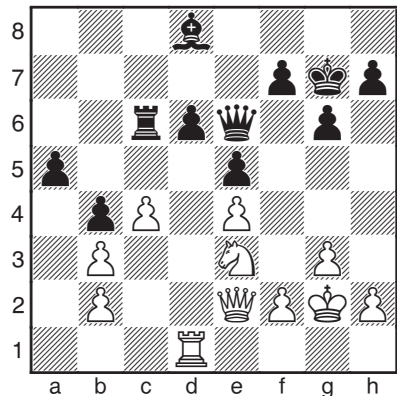
16...♘xf6 17.♘d5 ♘xd5 18.♖xd5 ♖c5 19.♖ad1 ♖xd5 20.♖xd5 ♖c8 21.c3 b4 22.c4 g6 23.g3 ♖c5



24.♖d1! Of course, the trade of rooks would be beneficial to Black's defense.

24...a5 25.♘c2 ♔g7 26.♖d3 ♖c6 27.♘e3 The white knight will jump to d5 and become a true champion of the position!

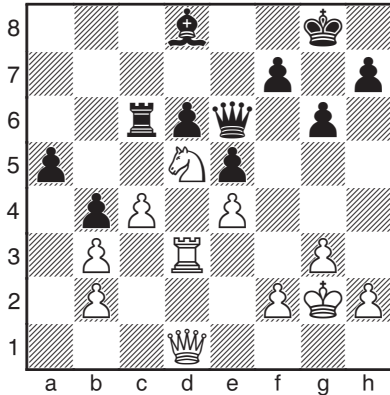
27...♖c8 28.♔g2 ♖e6 29.♖e2 ♙d8



30.♘d5 Let's take a look! The white

knight is superior here, being positioned on a beautiful outpost square. It is terribly hard for Black to chase it away or trade it off.

**30...♖c5 31.♚e3 ♘e7 32.♖d3 ♘d8 33.♚d2 ♖c6 34.♚d1 ♔g8**

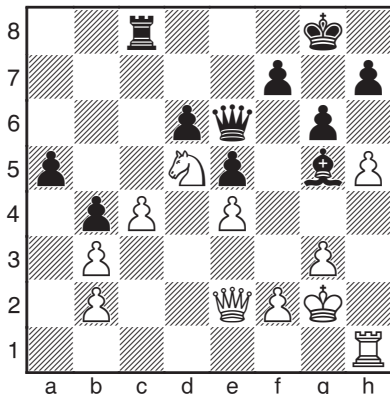


**35.h4!** White generates attack by trying to open up the h-file. If Black opts to block the position by playing h5 himself, his kingside will become even weaker.

**35...♔g7**

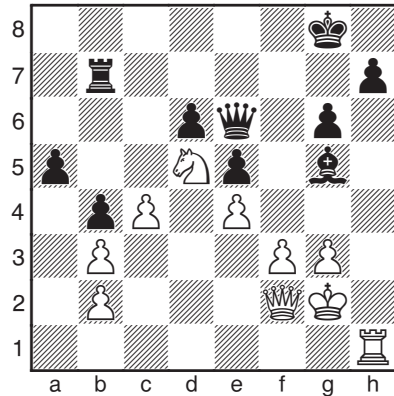
**35...h5±**

**36.h5 ♘g5 37.♚f3 ♖c8 38.♖d1 ♖c6 39.♚e2 ♖c8 40.♖h1 ♔g8**



**41.f3!** Excellent move! Polgar frees the f2-square for the queen enabling her to exert pressure on Black's queenside.

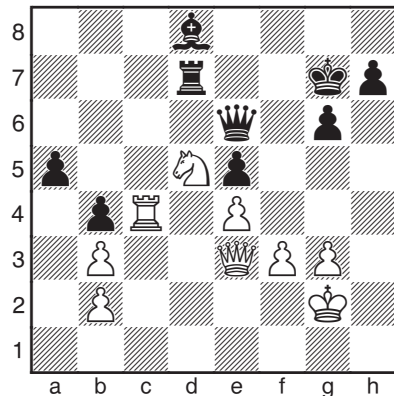
**41...♖b8 42.♚f2 ♖b7 43.hxg6 fxg6**



**44.c5!**

Next, White switches her attention to the queenside and executes a powerful breakthrough.

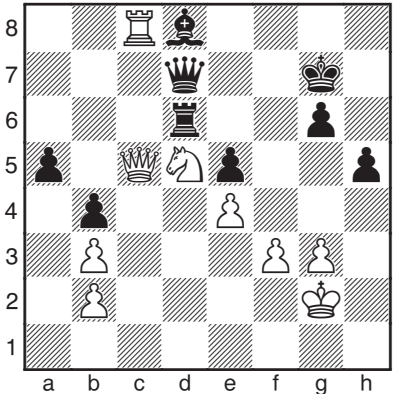
**44...dxc5 45.♚xc5 ♘d8 46.♖c1 ♔f7 47.♚e3 ♔g7 48.♖c4 ♖d7**



**49.♚c1** White seizes control over the c-file. Black's position is still pret-

ty decent, but it is impossible to play like a machine being under constant pressure.

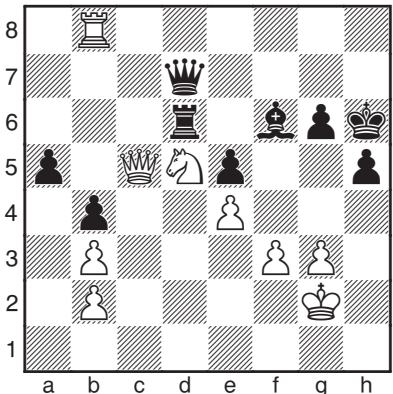
**49...h5 50.♖c6 ♜d6 51.♖c8 ♚d7  
52.♚c5**



**52...♚h6?**

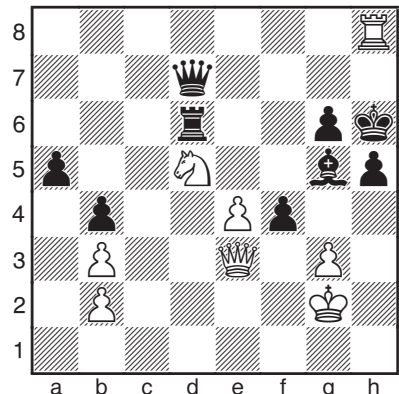
52...♙b6! This magnificent tactical shot was the only saving resource for Black.

**53.♖b8 ♙f6**

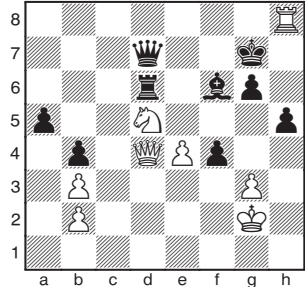


**54.♚e3+! ♙g5 55.f4 exf4 56.  
♖h8+**

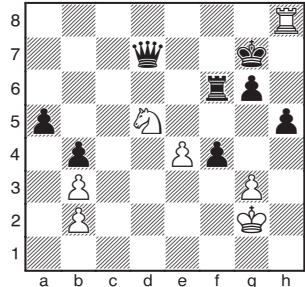
Black resigns unable to fight against White's marvelous combination.



**56...♚g7 57.♚d4+ ♙f6**



**58.♚xf6+! ♖xf6**



**59.♖h7+! ♚xh7 60.♘xf6+ and  
White is up a piece!**

**1 : 0**

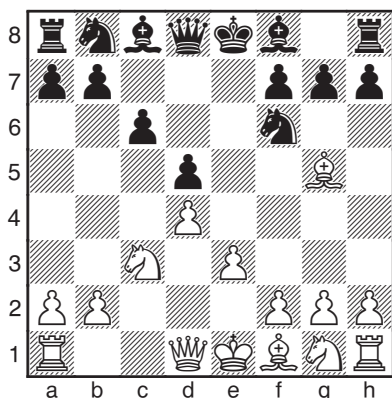




## Magnus Carlsen 2851 - Vladimir Kramnik 2801

Stavanger 2016

1.d4 d5 2.c4 e6 3.♘c3 ♘f6 4.  
cxd5 exd5 5.♙g5 c6 6.e3



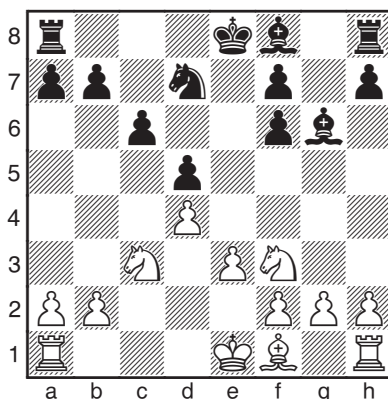
Two top class champions played a well known line of the Queen's Gambit Declined - Exchange Variation.

**6...♙f5**

Main lines for Black are: 6...h6 7.♙h4 ♙e7 8.♙d3 0-0 9.♘ge2 (9.♘f3 ♘e4 10.♙xe7 ♚xe7 11.♚c2 ♖e8 12.0-0 ♙f5=) 9...♖e8 10.♚c2 ♘bd7 11.0-0 ♘h5 12.♙xe7 ♚xe7 13.♖ae1 (13.♖ab1 a5 14.a3±) 13...♘f8 14.♚d2 ♘f6 15.♘g3 ♙e6 16.f3±

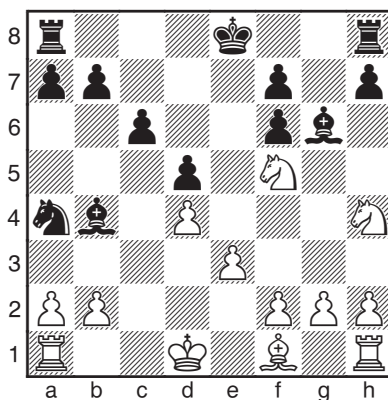
**7.♚f3! ♙g6 8.♙xf6 ♚xf6 9.♚xf6 gxf6 10.♘f3 ♘d7**

Black has permanently weak doubled pawns.

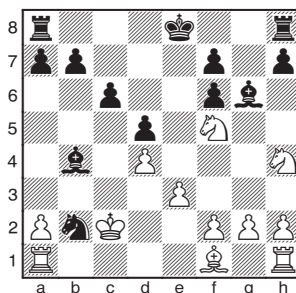


**11.♘h4 ♙e7 12.♘e2 ♘b6 13.♘g3!** The f5-square in front of the doubled pawns is extremely weak and Carlsen intends to use that square as an outpost for his knight.

**13...♙b4+ 14.♚d1 ♘a4 15.♘gf5!**

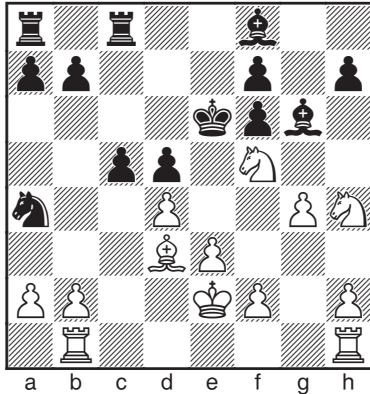


**15...♚d7** Taking the 'poisoned' pawn on b2 would be a grave blunder **15...♘xb2+? 16.♚c2**



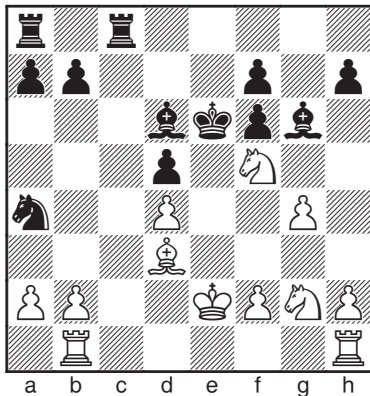
16...♖c4 (16...♖a4? 17.♔b3 ♕c3 18.♖c1+-) 17.♕xc4 dxc4 18. ♖hb1 c5 19.a3 ♕a5 20.♖xb7±

16.♖b1 ♔e6 17.♕d3 ♖hc8 18. ♔e2 ♕f8 19.g4! c5



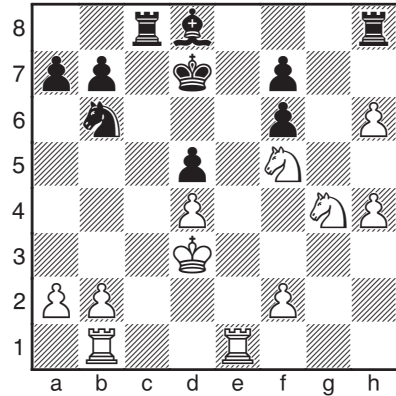
20.♗g2! The other knight is being transferred to a better location.

20...cxd4 21.exd4 ♕d6



22.h4 h5 23.♗g7+ Now White wins a pawn.

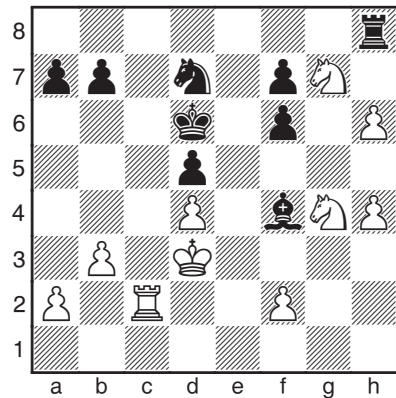
23...♔e7 24.gxh5 ♕xd3+ 25. ♔xd3 ♔d7 26.♗e3 ♗b6 27.♗g4 ♖h8 28.♖he1 ♕e7 29.♗f5 ♕d8 30.h6 ♖c8



31.b3 A fine move that restricts the black b6♗ and prevents it from coming into play.

31...♖c6 32.♗ge3 ♕c7 33.♖bc1 ♖xc1 34.♖xc1 ♕f4 35.♖c5 ♔e6 35...♕xh6 36.♗xd5+-

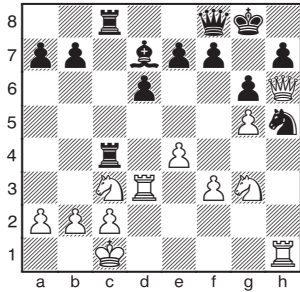
36.♗g7+ ♔d6 37.♗g4 ♗d7 38. ♖c2



38...f5 Black has no better move at his disposal here.

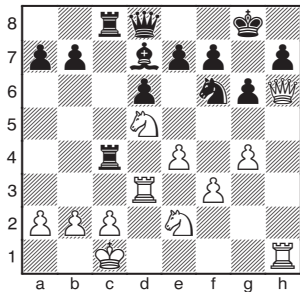
38...♕xh6? 39.♗xh6 ♖xh6 40. ♗f5+-

39.♗xf5+ ♔e6 40.♗g7+ ♔d6 41. ♖e2 ♔c6



22. ♖xh5! (22. ♚xf8+ ♔xf8 23. ♖xh5 gxf5 24. ♖xh5 ♔g7±) 22... ♚xf8 (22... gxf5 23. ♚xf8±) 23. ♚xf8 gxf5 24. ♖d2± ♔f8±;

b) 20. ♖d5!

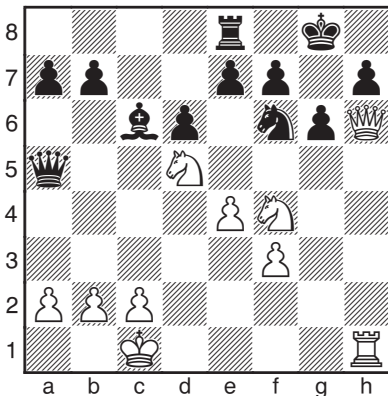


20... e6 (20... ♖xc2+ 21. ♔b1 ♖xe2 22. ♖xf6+ exf6 23. ♖xd6+-) 21. ♖e3±

20. g5! ♖xg5 21. ♖d5! ♖xd5

21... ♖xd5 22. ♚xh7+ ♔f8 23. ♚h8#

22. ♖xd5 ♖e8 23. ♖ef4 ♔c6



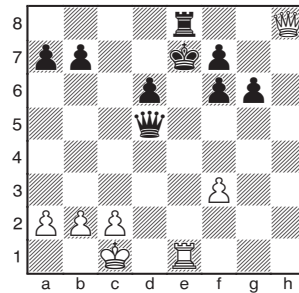
24. e5!+- Exceptional move, the 5<sup>th</sup> rank is being of the highest importance.

24. ♖xf6+ exf6 25. ♖h5 ♚g5+! and Black would manage to save himself.

24... ♔xd5 25. exf6 exf6 26. ♚xh7+ ♔f8 27. ♚h8+

If 27. ♖xd5?? White will lose after 27... ♖e1+ 28. ♖xe1 ♚xe1#;

After 27. ♚h8+ Black resigned because of 27... ♔e7 28. ♖xd5+ ♚xd5 29. ♖e1+

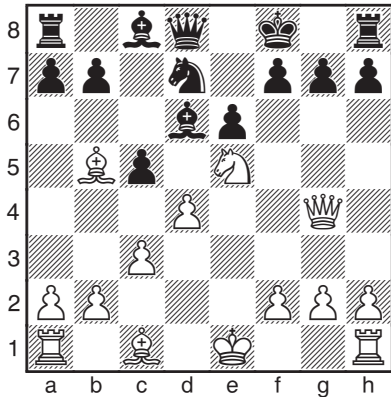


1 : 0



Garry Kasparov - Ruslan Ponomariov  
Linares 2002

1. e4 e6 2. d4 d5 3. ♖c3 dxe4 4. ♖xe4 ♖d7 5. ♖f3 ♖gf6 6. ♖xf6+ ♖xf6 7. c3 c5 8. ♖e5!? ♖d7 9. ♔b5 ♔d6 10. ♚g4 ♔f8



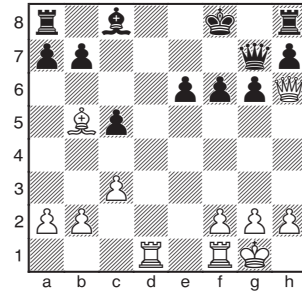
**11.0–0!** Garry Kasparov goes for a crafty pawn sacrifice in order to speed up development of his pieces.

**11...♞xe5 12.dxe5 ♕xe5 13.♔g5**

All of White's moves are with development and threat! Exceptional play.

**13...♕f6 14.♖ad1 ♖c7 15.♙h4 ♕xg5 16.♙xg5 f6 17.♙h5 g6 18.♙h6+ ♔f7**

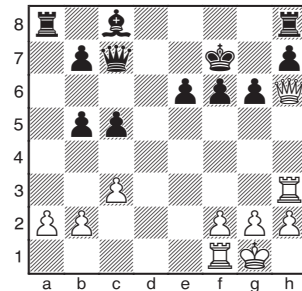
**18...♙g7**



**19.♖d8+ ♔f7 20.♕e8+! ♖xe8 21.♙xg7+ ♔xg7 22.♖xe8±**

**19.♖d3 a6 20.♖h3! ♙e7**

**20...axb5**



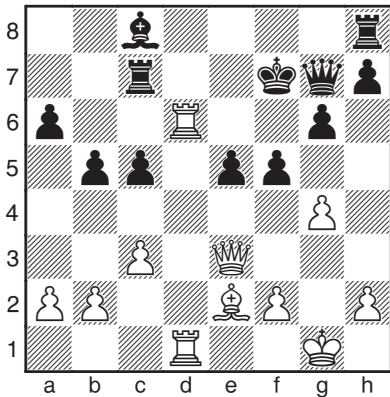
**21.♙xh7+ ♖xh7 22.♖xh7++-**

**21.♕d3 f5 22.g4!** With a safe king, initiative in hands and control in the center these moves come in naturally.

**22...♙f6 23.♖d1 b5 24.♕e2 e5 25.♖hd3 ♖a7 26.♖d6 ♙g7 27.♙e3 ♖c7**



Ruslan Ponomarev



Magnificent final blow!

38...♔xe6 39.♖d6+-- Deflection!

1 : 0



Maia Chiburdanidze - Semen I  
Dvoiry

USSR 1980

**28.a4!** Kasparov is playing across the whole board!

**28...e4**

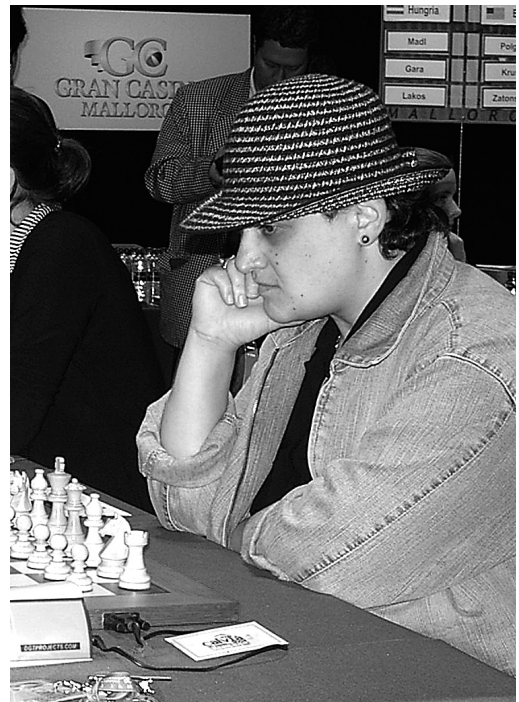
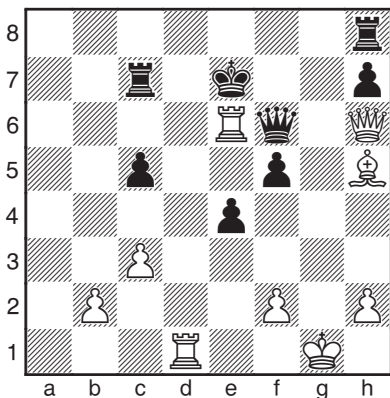
**28...c4 29.♖b6!+--**

**29.axb5 axb5 30.♗xb5** White regains the pawn and proceeds with the attack.

**30...♖e5 31.♖g5 ♖e7 32.♖h6 ♗e6 33.♖f4 ♗c8 34.♖h6**

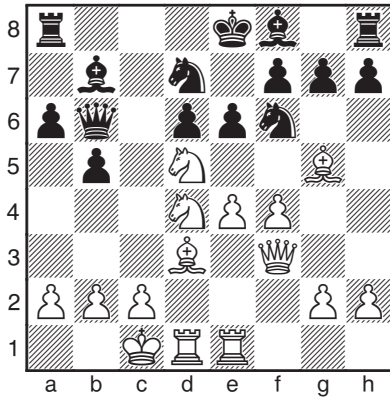
Here White repeats the moves twice gaining time on the clock and putting psychological pressure on opponent.

**34...♗e6 35.gxf5 gxf5 36.♗e2 ♖f6 37.♗h5+ ♔e7 38.♖xe6+!**



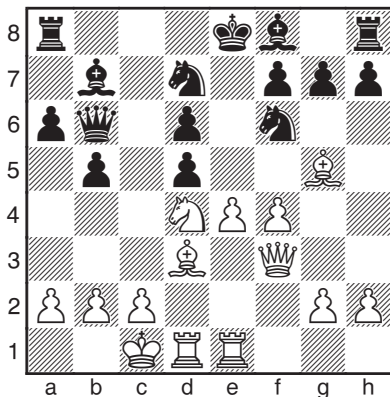
Maia Chiburdanidze





This is a thematic knight sacrifice in the attack on the uncastled king.

**12...exd5?!**



12...♙xd4 Black should be able to achieve excellent position in all the frequently played continuations. 13.♙xf6 gxf6 14.♙xb5 ♖c5 15. b4! (15.♘xf6+ ♔d8 16.♘xd7 ♗xb5 17.♘xf8 ♖xf8 18.♗a3 ♔e8 19.♗xd6 ♗c6 20.♗d4 ♗c7) 15...♗xb5! 16.♘c7+ ♔e7 17. ♘xb5 axb5 18.♗d3 ♖a6 19.♗xb5 ♖b6 20.♗d3 ♙h6 21.g3 These are some of deeply explored lines in the realm of the Najdorf Sicilian Defense.

21...♖a8∞

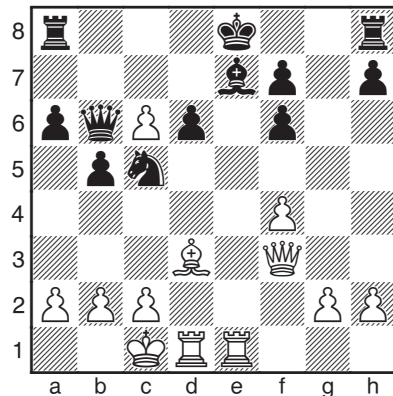
**13.♘c6!!** The reigning World Champion at the time executes an outstanding stroke!

13.exd5+ ♔d8 14.♙f5! (14.♘c6+ ♔c7-+) 14...♔c7∞

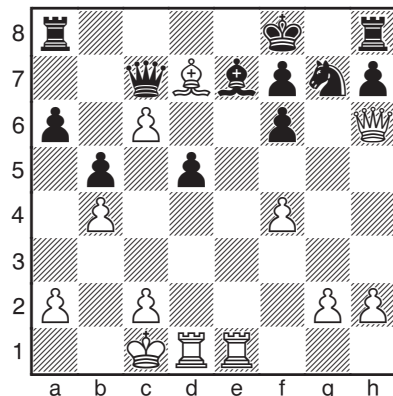
**13...♙xc6**

13...d4 14.e5!!+-

**14.exd5+ ♙e7 15.dxc6 ♘c5 16. ♙xf6 gxf6**



17.♙f5 ♖c7 18.b4 ♘e6 19.♗h5 ♘g7 20.♙d7+ ♔f8 21.♗h6 d5



**22.♖xe7! ♔xe7 23.♖e1!+**

# CHAPTER III

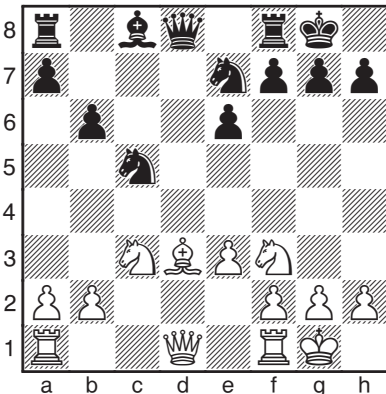
## TACTICS CORNER

In the final chapter of the book we will make an introduction to more advanced tactical themes. The following examples are of great practical importance and should be studied with great care.



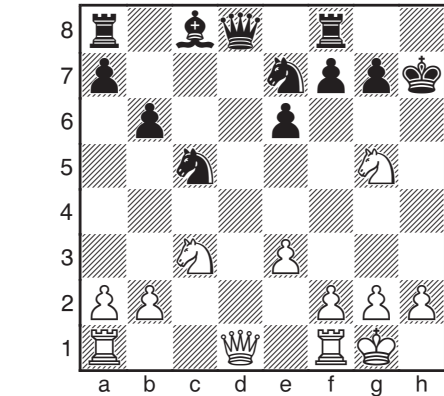
### Practical example

**1.d4 d5 2.c4 e6 3.♘c3 ♘f6 4. ♘g5 ♘bd7 5.e3 ♙e7 6.♘f3 0-0 7.♙d3 c5 8.0-0 b6 9.cxd5 ♘xd5 10.♙xe7 ♘xe7? 11.dxc5 ♘xc5**



**12.♙xh7+!** This a thematic sacrifice on h7. Please study this example with special attention.

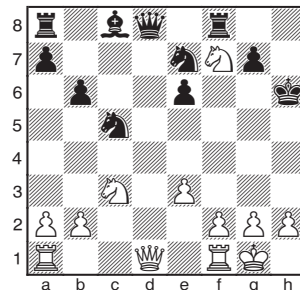
**12...♙xh7 13.♘g5+**



**13...♙g6**

**13...♙g6 14.♙h5+-** The sacrifice should be successful now - Black doesn't have ♘f6 resource and defensive maneuver with his light-squared bishop along the b1-h7 diagonal. **14...♖e8 15.♙xf7+ ♙h8 16.♖fd1 ♙d7 17.b4 ♘b7 18.♘ce4+-;**

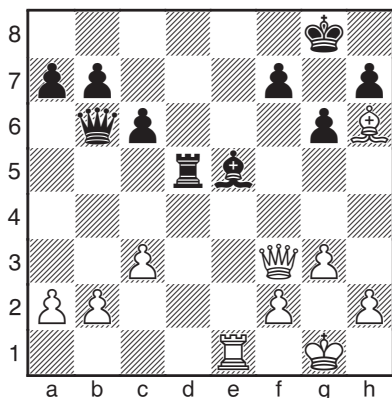
**13...♙h6 14.♘xf7+!**



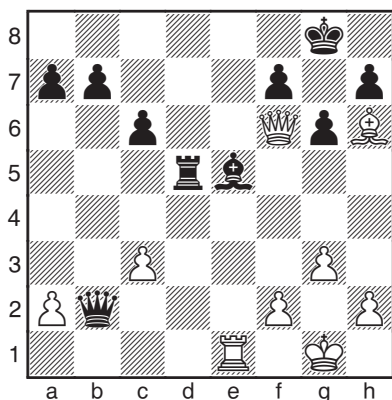
Black loses the queen due to the knight fork.



## Practical example



1... ♖xb2 2. ♖f6



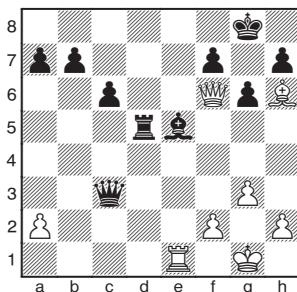
Also interesting for White is:

2. ♔g2!?

2.g4!? I suggest you to explore both possible continuations by yourself, taking sufficient time for deliberation.

2... ♖c1!! Magnificent defense by Black. He utilises the motif of deflection to his benefit.

2... ♖xc3??



3. ♖g7+! ♖xg7 4. ♖e8+ ♖f8 5. ♖xf8#

3. ♖xe5

3. ♖xc1 ♖xf6±

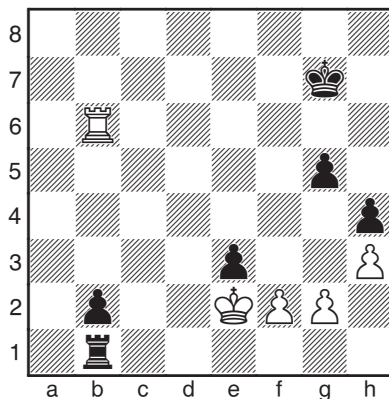
3... ♖xh6 4. ♖b8+ ♔g7 5. ♖xb7 ♖d2 Black is clearly better. Nevertheless, he didn't manage to win the game later on. **1/2 : 1/2**



Slobodan Martinovic – Atif Dumpor

Novi Becej 1986

Next we will explore a nice tactical stroke in the endgame.



1...g4! A beautiful pawn break!